

Network Video Recorder

NR-C1-4B1/8B1/16B1



*Images shown are for illustration purposes only and may not be an exact representation of the product.

FEATURES

- Support Advance H.265, H.265, H.264 video formats
- 4/8/16-channel input
- Support mainstream cameras of ONVIF conformance(Profile S, Profile G, Profile T) and RTSP protocols
- Support 1-ch HDMI, 1-ch VGA, HDMI at up to 4K(3840x2160) resolution
- HDMI and VGA simultaneous output
- Up to 4K resolution recording
- Support cloud upgrade

TECHNICAL SPECIFICATIONS

DECODING

Decoding Format Advance H.265, H.265, H.264

Decoding Capability	1 x 4K@30, 4 x 5MP@25, 4 x 4MP@25, 4 x 3MP@25	1 x 4K@30, 4 x 5MP@25, 4 x 4MP@25, 4 x 3MP@25, 6 x 1080P@30, 8 x 720P@30	1 x 4K@30, 4 x 5MP@25, 4 x 4MP@25, 4 x 3MP@25, 6 x 1080P@30, 8 x 720P@30, 16 x D1@25
---------------------	---	--	--

Audio Compression G.711A, G.711U

NETWORK

Incoming Bandwidth 64Mbps

Outgoing Bandwidth 48Mbps

Remote Users 128

Protocols TCP/IP; P2P; UPnP; NTP; DHCP; PPPoE; HTTP; HTTPS; DNS; DDNS; SMTP; RTP; SP; IPv4

Browser(Plugin) Windows: IE (IE10/ 11), Firefox (version 52.0 and above), Chrome (version 45 and above), Edge (version 79 and above)

VIDEO / AUDIO INPUT

IP Video Input	4-ch: NR-C1-4B1	8-ch: NR-C1-8B1	16-ch: NR-C1-16B1
----------------	-----------------	-----------------	-------------------

VIDEO / AUDIO OUTPUT

HDMI Output HDMI:4K(3840x2160)/30Hz, 1920x1080/60Hz, 1920x1080/50Hz, 1600x1200/60Hz, 1280x1024/60Hz, 1280x720/60Hz, 1024x768/60Hz

VGA Output VGA:1920x1080/60Hz, 1920x1080/50Hz, 1600x1200/60Hz, 1280x1024/60Hz, 1280x720/60Hz, 1024x768/60Hz

3.5mm Audio Output 1-ch

Liveview Display	1/4	1/4/6/8/9	1/4/6/8/9/16
------------------	-----	-----------	--------------

Corridor Mode Screen	3/4	3/4/5/7/9	3/4/5/7/9/10/12/16
----------------------	-----	-----------	--------------------

SNAPSHOT

FTP/Schedule/Event Snapshot 1-ch snapshot, up to D1 resolution

RECORDING

Recording Resolution 8MP/6MP/5MP/4MP/3MP/1080P/960P/720P/D1/2CIF/CIF

Synchronous Playback in Local	4-ch	8-ch	16-ch
-------------------------------	------	------	-------

SMART

VCA Detection by IPC Face Detection; SIP (Intrusion Detection, Cross Line Detection, Enter Area, Leave Area); Smart Motion Detection (SMD)

VCA Search Behavior Search

Smart by IPC Total 4-ch(Face Detection, SIP, SMD)

Capacity of Snapshot Records 2 millions records for face snapshot

ALARM

Alert Alarm	IP Conflict; Network Disconnected; Disk Offline; Disk Abnormal; Illegal Access; Hard Disk Space Low; Hard Disk Full; Recording/ Snapshot Abnormal
-------------	---

GUI LANGUAGE

GUI Language	21 languages: Chinese, English, Vietnamese, Thai, Turkish, Spanish (Latin America), Portuguese (Brazil), Spanish, Portuguese, French, German, Italian, Dutch, Polish, Czech, Hungarian, Slovak, Russian, Hebrew, Arabic, Ukrainian
--------------	--

HARD DISK

SATA	1 SATA Interface
Capacity	Up to 10TB for each HDD(The maximum HDD capacity varies with environment temperature and hard disk size)

EXTERNAL INTERFACE

Network Interface	1 RJ45 10M/100M self-adaptive Ethernet Interface
USB	Rear panel: 2 x USB2.0
Power Supply	DC 12V/2A

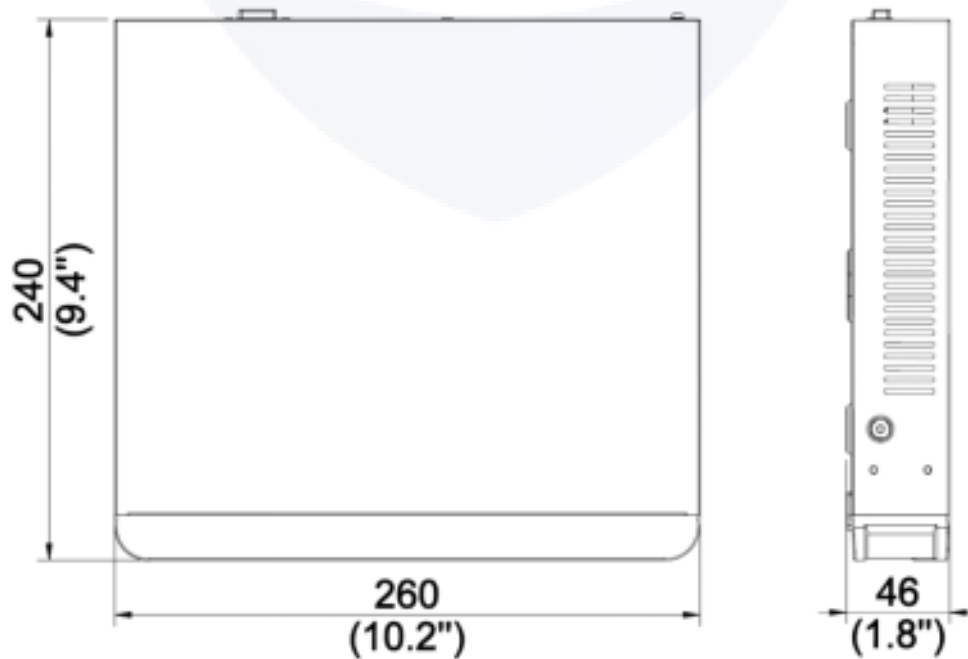
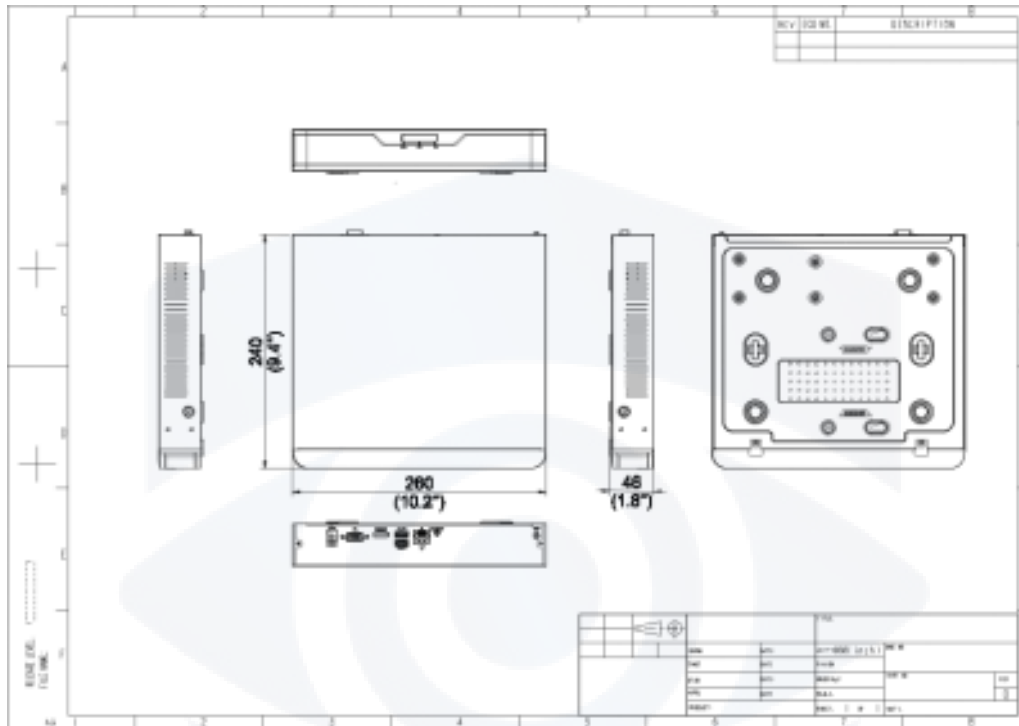
WORKING ENVIRONMENT

Working Temperature	10 °C ~ 55 °C (14 °F ~ 131 °F)
Working Humidity	≤ 90% RH (non-condensing)
Power Consumption (without HDD)	≤ 5W

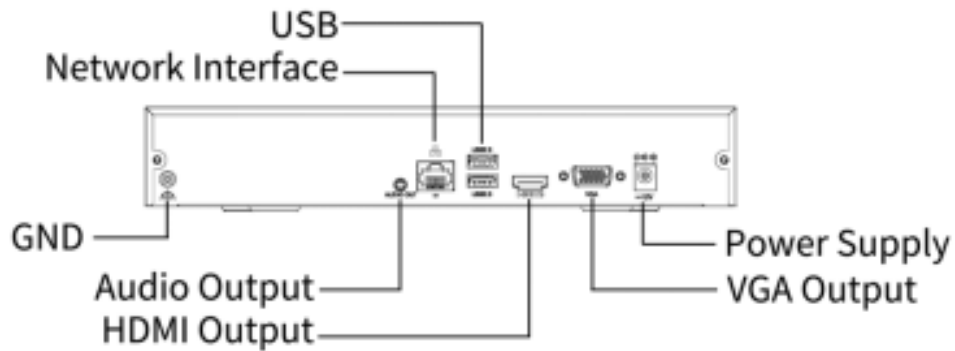
DIMENSIONS

Weight (without HDD) $\leq 0.98\text{Kg}$ (2.16lb)

Dimensions 260mm \times 240mm \times 46mm (10.2" \times 9.4" \times 1.8")



REAR PANEL



UNEVIU TECHNOLOGIES INDIA PVT LTD

SadguruVilla - 123/128, Gorai, Borivali west, Mumbai MH - 400091 (INDIA)

Email: Support@uneeviu.com

www.uneeviu.com

*Product specifications and availability are subject to change without notice.

*uneeviu shall not be held liable/responsible for any typographical error and reserve right to change the content without prior notice, despite our best effort to make the content error-less